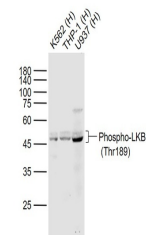


## Product Datasheet

### LKB1 (phospho-Thr189) antibody (orb5555)

<b>Description</b>	LKB1 (phospho-Thr189) antibody
<b>Species/Host</b>	Rabbit
<b>Reactivity</b>	Human
<b>Conjugation</b>	Unconjugated
<b>Tested Applications</b>	WB
<b>Immunogen</b>	KLH conjugated synthesised phosphopeptide derived from human LKB1 around the phosphorylation site of Thr189 (G(p-T)LK)
<b>Target</b>	Phospho-LKB1 (Thr189)
<b>Preservatives</b>	0.01M TBS(pH7.4) with 1% rAlbumin, 0.03% Proclin300 and 50% Glycerol.
<b>Form/Appearance</b>	Liquid
<b>Concentration</b>	1mg/ml
<b>Storage</b>	Maintain refrigerated at 2-8°C for up to 2 weeks. For long term storage store at -20°C in small aliquots to prevent freeze-thaw cycles.
<b>Note</b>	For research use only
<b>Isotype</b>	IgG
<b>Clonality</b>	Polyclonal
<b>MW</b>	48 kDa
<b>Uniprot ID</b>	<a href="#">Q15831</a>
<b>Dilution Range</b>	WB=1:500-2000
<b>Expiration Date</b>	12 months from date of receipt.



Western blot: Lane 1:K562 (Human) Cell;La...