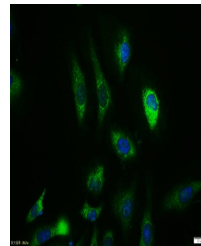


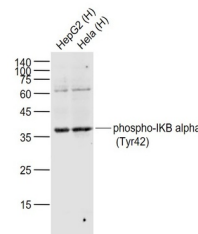
Product Datasheet

NFKBIA (phospho-Tyr42) antibody (orb5520)

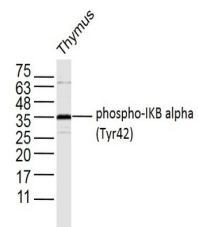
Description	NFKBIA (phospho-Tyr42) antibody
Species/Host	Rabbit
Reactivity	Human, Mouse
Conjugation	Unconjugated
Tested Applications	FC, IHC-P, WB
Immunogen	KLH conjugated Synthesised phosphopeptide derived from human IKB alpha around the phosphorylation site of Tyr42 (EE(p-Y)EQ)
Target	phospho-IKB alpha (Tyr42)
Preservatives	0.01M TBS(pH7.4) with 1% rAlbumin, 0.03% Proclin300 and 50% Glycerol.
Form/Appearance	Liquid
Concentration	1mg/ml
Storage	Maintain refrigerated at 2-8°C for up to 2 weeks. For long term storage store at -20°C in small aliquots to prevent freeze-thaw cycles.
Note	For research use only
Isotype	IgG
Clonality	Polyclonal
MW	35 kDa
Uniprot ID	P25963
Dilution Range	WB=1:500-2000, IHC-P=1:100-500, Flow-Cyt=1µg/Test, IHC-F=1:100-500, IF=1:100-500, ELISA=1:5000-10000
Expiration Date	12 months from date of receipt.



ICC analysis of HeLa cell using phospho-...



Western blot:Lane 1:HepG2 (Human) Cell;L...



Western blot:Thymus(Mouse);Primary:Anti-...