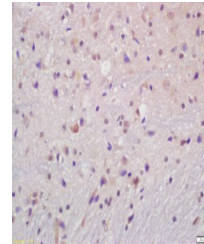


Product Datasheet

IKK beta (phospho-Ser466) antibody (orb5518)

Description	IKK beta (phospho-Ser466) antibody
Species/Host	Rabbit
Reactivity	Human, Mouse, Rat
Conjugation	Unconjugated
Tested Applications	FC, ICC
Immunogen	KLH conjugated Synthesised phosphopeptide derived from human IKK beta around the phosphorylation site of Ser466 (CL(p-S)KM)
Target	phospho-IKK beta (Ser466)
Preservatives	0.01M TBS(pH7.4) with 1% rAlbumin, 0.03% Proclin300 and 50% Glycerol.
Form/Appearance	Liquid
Concentration	1mg/ml
Storage	Shipped at 4°C. Store at -20 °C for one year. Avoid repeated freeze/thaw cycles.
Note	For research use only
Isotype	IgG
Clonality	Polyclonal
MW	87 kDa
Uniprot ID	O14920
Dilution Range	ICC=1:100, Flow-Cyt=1ug/Test, WB=1:500-2000, IHC-P=1:100-500, IHC-F=1:100-500, IF=1:100-500, ELISA=1:5000-10000
Expiration Date	12 months from date of receipt.



Immunohistochemical staining of rat brain...