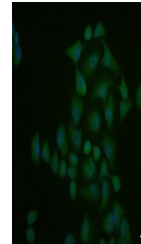


Product Datasheet

IKK alpha (Phospho-Thr23) antibody (orb5512)

Description	IKK alpha (Phospho-Thr23) antibody
Species/Host	Rabbit
Reactivity	Human, Mouse
Conjugation	Unconjugated
Tested Applications	FC, ICC, IHC-P
Immunogen	KLH conjugated Synthesised phosphopeptide derived from human IKK alpha around the phosphorylation site of Thr23 (LG(p-T)GG)
Target	Phospho-IKK alpha (Thr23)
Preservatives	0.01M TBS(pH7.4) with 1% rAlbumin, 0.03% Proclin300 and 50% Glycerol.
Form/Appearance	Liquid
Concentration	1mg/ml
Storage	Maintain refrigerated at 2-8°C for up to 2 weeks. For long term storage store at -20°C in small aliquots to prevent freeze-thaw cycles.
Note	For research use only
Isotype	IgG
Clonality	Polyclonal
MW	85 kDa
Uniprot ID	O15111
Dilution Range	IHC-P=1:100-500, ICC=1:100, Flow-Cyt=2ug/Test, WB=1:500-2000, IHC-F=1:100-500, IF=1:100-500, ELISA=1:5000-10000
Expiration Date	12 months from date of receipt.



ICC analysis of HeLa cell using Phospho-...