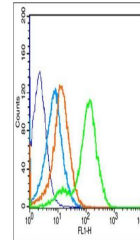


Product Datasheet

IGF1R (phospho-Tyr1165/Tyr1166) antibody (orb5505)

Description	IGF1R (phospho-Tyr1165/Tyr1166) antibody
Species/Host	Rabbit
Reactivity	Mouse, Rat
Conjugation	Unconjugated
Tested Applications	FC
Immunogen	KLH conjugated Synthesised phosphopeptide derived from human IGF1R around the phosphorylation site of Tyr1165+Tyr1166 (TD(p-Y)(p-Y)RK)
Target	phospho-IGF1R (Tyr1165 + Tyr1166)
Preservatives	0.01M TBS(pH7.4) with 1% rAlbumin, 0.03% Proclin300 and 50% Glycerol.
Form/Appearance	Liquid
Concentration	1mg/ml
Storage	Shipped at 4°C. Store at -20 °C for one year. Avoid repeated freeze/thaw cycles.
Note	For research use only
Isotype	IgG
Clonality	Polyclonal
MW	150 kDa
Uniprot ID	P08069
Dilution Range	Flow-Cyt=1µg/Test
Expiration Date	12 months from date of receipt.



Flow cytometric analysis of Mouse Kidney...