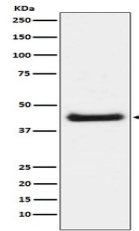


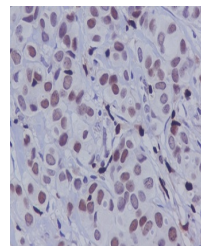
Product Datasheet

Phospho-c-Jun (S63) Rabbit Monoclonal Antibody (orb548642)

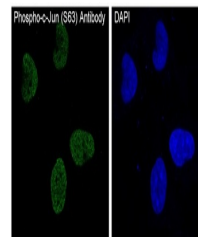
Description	Phospho-c-Jun (S63) Rabbit Monoclonal Antibody
Species/Host	Rabbit
Reactivity	Human, Mouse, Rat
Conjugation	Unconjugated
Tested Applications	ICC, IF, IHC, WB
Immunogen	A synthesized peptide derived from human Phospho-c-Jun (S63)
Form/Appearance	Liquid
Concentration	Actual concentration vary by lot. Use suggested dilution ratio to decide dilution procedure.
Storage	Maintain refrigerated at 2-8°C for up to 2 weeks. For long term storage store at -20°C in small aliquots to prevent freeze-thaw cycles.
Note	For research use only
Application notes	WB 1:500-1:2000 IHC 1:50-1:200 ICC/IF 1:50-1:200
Isotype	Rabbit IgG
Clonality	Monoclonal
MW	35676 MW
Uniprot ID	P05412
Expiration Date	12 months from date of receipt.



Western blot analysis of Phospho-c-Jun (...)



IHC analysis of Phospho-c-Jun (S63) usin...



IF analysis of immunocytochemical sectio...