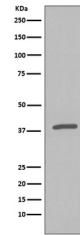


Product Datasheet

Phospho-IKB alpha (S32) NFKBIA Rabbit Monoclonal Antibody (orb548627)

Description	Phospho-IKB alpha (S32) NFKBIA Rabbit Monoclonal Antibody
Species/Host	Rabbit
Reactivity	Human
Conjugation	Unconjugated
Tested Applications	IP, WB
Immunogen	A synthesized peptide derived from human Phospho-IKB alpha (S32)
Form/Appearance	Liquid
Concentration	Actual concentration vary by lot. Use suggested dilution ratio to decide dilution procedure.
Storage	Maintain refrigerated at 2-8°C for up to 2 weeks. For long term storage store at -20°C in small aliquots to prevent freeze-thaw cycles.
Note	For research use only
Application notes	WB 1:500-1:2000IP 1:50
Isotype	Rabbit IgG
Clonality	Monoclonal
MW	35609 MW
Uniprot ID	P25963
Expiration Date	12 months from date of receipt.



Western blot analysis of Phospho-IKB alp...