

Product Datasheet

Phospho-POLR2A (S5) Rabbit Monoclonal Antibody (orb548621)

Description Phospho-POLR2A (S5) Rabbit Monoclonal Antibody

Species/Host Rabbit

Reactivity Human, Mouse, Rat

Conjugation Unconjugated

Tested Applications FC, ICC, IF, IHC, IP, WB

Immunogen A synthesized peptide derived from human POLR2A

Form/Appearance Liquid

Concentration Actual concentration vary by lot. Use suggested dilution ratio to decide dilution procedure.

Storage Maintain refrigerated at 2-8°C for up to 2 weeks. For long term storage store at -20°C in small aliquots to prevent freeze-thaw cycles.

Note For research use only

Application notes WB 1:500-1:2000 IHC 1:50-1:200 ICC/IF 1:50-1:200 IP 1:20 FC 1:40

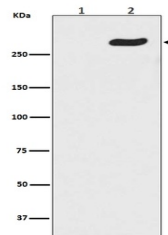
Isotype Rabbit IgG

Clonality Monoclonal

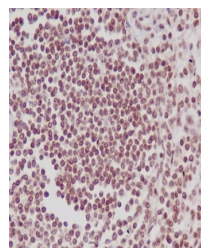
MW 217176 MW

Uniprot ID [P24928](#)

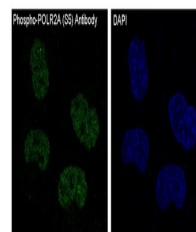
Expiration Date 12 months from date of receipt.



Western blot analysis of Phospho-POLR2A ...



IHC analysis of Phospho-POLR2A (S5) usin...



IF analysis of immunocytochemical sectio...