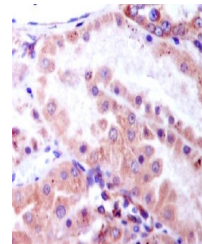


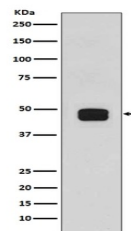
Product Datasheet

Phospho-GSK3 beta (Ser9) Rabbit Monoclonal Antibody (orb548617)

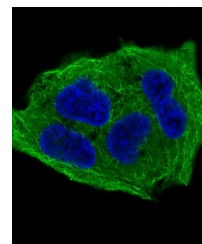
Description	Phospho-GSK3 beta (Ser9) Rabbit Monoclonal Antibody
Species/Host	Rabbit
Reactivity	Human
Conjugation	Unconjugated
Tested Applications	ICC, IF, IHC, WB
Immunogen	A synthesized peptide derived from human Phospho-GSK3 beta (Ser9)
Form/Appearance	Liquid
Concentration	Actual concentration vary by lot. Use suggested dilution ratio to decide dilution procedure.
Storage	Maintain refrigerated at 2-8°C for up to 2 weeks. For long term storage store at -20°C in small aliquots to prevent freeze-thaw cycles.
Note	For research use only
Application notes	WB 1:5000-1:10000IHC 1:50-1:200ICC/IF 1:50-1:200
Isotype	Rabbit IgG
Clonality	Monoclonal
MW	46744 MW
Uniprot ID	P49841
Expiration Date	12 months from date of receipt.



Immunohistochemical analysis of paraffin...



Western blot analysis of GSK3 beta (phos...



IF analysis of immunocytochemical sectio...