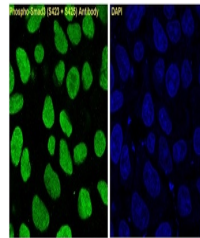


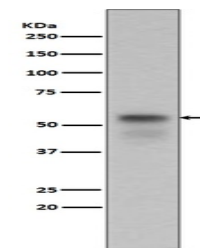
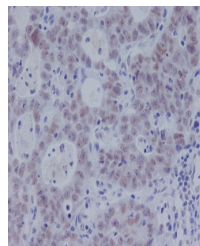
Product Datasheet

Phospho-Smad3 (S423 + S425) Rabbit Monoclonal Antibody (orb548575)

| | |
|----------------------------|---|
| Description | Phospho-Smad3 (S423 + S425) Rabbit Monoclonal Antibody |
| Species/Host | Rabbit |
| Reactivity | Human, Mouse |
| Conjugation | Unconjugated |
| Tested Applications | ICC, IF, IHC, WB |
| Immunogen | A synthesized peptide derived from human Phospho-Smad3 (S423 + S425) |
| Form/Appearance | Liquid |
| Concentration | Actual concentration vary by lot. Use suggested dilution ratio to decide dilution procedure. |
| Storage | Maintain refrigerated at 2-8°C for up to 2 weeks. For long term storage store at -20°C in small aliquots to prevent freeze-thaw cycles. |
| Note | For research use only |
| Application notes | WB 1:500-1:2000 IHC 1:50-1:200 ICC/IF 1:50-1:200 |
| Isotype | Rabbit IgG |
| Clonality | Monoclonal |
| MW | 48081 MW |
| Uniprot ID | P84022 |
| Expiration Date | 12 months from date of receipt. |



Immunofluorescent analysis of A549 cells...



Immunohistochemical analysis of paraffin...