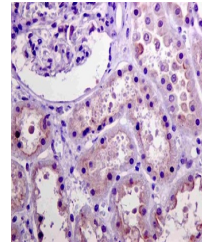


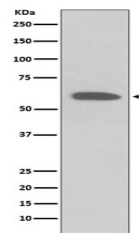
Product Datasheet

Phospho-Akt (Ser473) AKT1 Rabbit Monoclonal Antibody (orb548568)

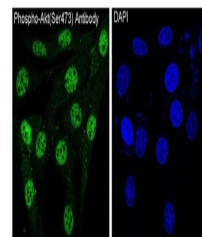
Description	Phospho-Akt (Ser473) AKT1 Rabbit Monoclonal Antibody
Species/Host	Rabbit
Reactivity	Human, Mouse, Rat
Conjugation	Unconjugated
Tested Applications	ICC, IF, IHC, WB
Immunogen	A synthesized peptide derived from human Phospho-Akt (Ser473)
Form/Appearance	Liquid
Concentration	Actual concentration vary by lot. Use suggested dilution ratio to decide dilution procedure.
Storage	Maintain refrigerated at 2-8°C for up to 2 weeks. For long term storage store at -20°C in small aliquots to prevent freeze-thaw cycles.
Note	For research use only
Application notes	WB 1:500-1:2000IHC 1:50-1:200ICC/IF 1:100-1:500
Isotype	Rabbit IgG
Clonality	Monoclonal
MW	55686 MW
Uniprot ID	P31749
Expiration Date	12 months from date of receipt.



Immunohistochemical analysis of paraffin...



Western blot analysis on 2 NIH/3T3 cell ...



Immunofluorescent analysis of NIH/3T3 ce...