
Product Datasheet

Phospho-SMC1 (S957) Monoclonal Antibody (orb548532)

Description

Phospho-SMC1 (S957) Monoclonal Antibody

Species/Host

Rabbit

Reactivity

Human

Conjugation

Unconjugated

Tested Applications

ICC, IF, IHC, WB

Immunogen

A synthesized peptide derived from human Phospho-SMC1 (S957) Structural maintenance of chromosomes 1 (SMC1) protein is a chromosomal protein member of the cohesin complex that enables sister chromatid cohesion and plays a role in DNA repair. ATM/NBS1-dependent phosphorylation of SMC1 occurs at Ser957 and Ser966 in response to ionizing radiation (IR) as part of the intra-S-phase DNA damage checkpoint. SMC1 phosphorylation is ATM-independent in cells subjected to other forms of DNA damage, including UV light and hydroxyurea treatment.

Form/Appearance

Liquid

Concentration

Actual concentration vary by lot. Use suggested dilution ratio to decide dilution procedure.

Storage

Maintain refrigerated at 2-8°C for up to 2 weeks. For long term storage store at -20°C in small aliquots to prevent freeze-thaw cycles.

Note

For research use only

Application notes

WB 1:500-1:2000 IHC 1:50-1:200 ICC/IF 1:50-1:200

Isotype

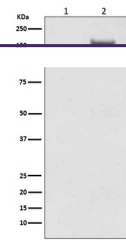
Rabbit IgG

Clonality

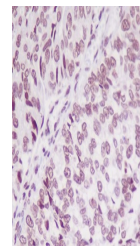
Monoclonal

Uniprot ID
Q14683
Expiration Date

12 months from date of receipt.



Western blot analysis of SMC1A expression...



IHC analysis of SMC1A using anti-SMC1A a...