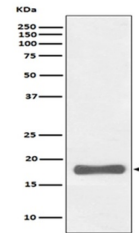


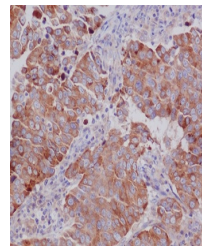
Product Datasheet

PUMA BBC3 Rabbit Monoclonal Antibody (orb548333)

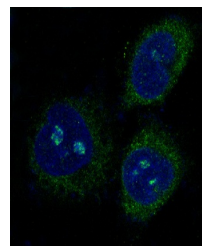
Description	PUMA BBC3 Rabbit Monoclonal Antibody
Species/Host	Rabbit
Reactivity	Human, Mouse, Rat
Conjugation	Unconjugated
Tested Applications	FC, ICC, IF, IHC, WB
Immunogen	A synthesized peptide derived from human PUMA
Form/Appearance	Liquid
Concentration	Actual concentration vary by lot. Use suggested dilution ratio to decide dilution procedure.
Storage	Maintain refrigerated at 2-8°C for up to 2 weeks. For long term storage store at -20°C in small aliquots to prevent freeze-thaw cycles.
Note	For research use only
Application notes	WB 1:500-1:2000IHC 1:50-1:200ICC/IF 1:50-1:200FC 1:50
Isotype	Rabbit IgG
Clonality	Monoclonal
MW	20532 MW
Uniprot ID	Q9BXH1
Expiration Date	12 months from date of receipt.



Western blot analysis of PUMA expression...



Immunohistochemical analysis of paraffin...



Immunofluorescent analysis of HeLa cells...