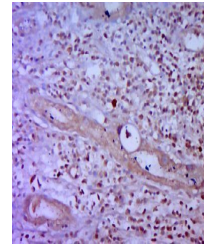


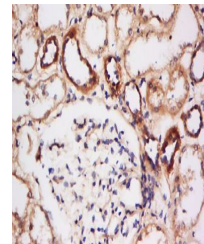
Product Datasheet

HSP27 (phospho-Ser15) antibody (orb5483)

Description	HSP27 (phospho-Ser15) antibody
Species/Host	Rabbit
Reactivity	Human
Conjugation	Unconjugated
Tested Applications	FC, ICC, WB
Immunogen	KLH conjugated Synthesised phosphopeptide derived from human HSP27 around the phosphorylation site of Ser15 (GP(p-S)WD)
Target	Phospho-HSP27 (Ser15)
Preservatives	0.01M TBS(pH7.4) with 1% rAlbumin, 0.03% Proclin300 and 50% Glycerol.
Form/Appearance	Liquid
Concentration	1mg/ml
Storage	Shipped at 4°C. Store at -20 °C for one year. Avoid repeated freeze/thaw cycles.
Note	For research use only
Isotype	IgG
Clonality	Polyclonal
MW	23 kDa
Uniprot ID	P04792
Dilution Range	WB=1:500-2000, ICC=1:100, Flow-Cyt=1µg /Test, IHC-P=1:100-500, IHC-F=1:100-500, IF=1:100-500, ELISA=1:5000-10000
Expiration Date	12 months from date of receipt.



Immunohistochemical staining of human ga...



Immunohistochemical staining of human ki...