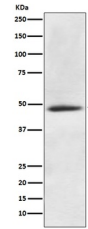


Product Datasheet

CaMKII alpha CAMK2A Rabbit Monoclonal Antibody (orb548179)

Description	CaMKII alpha CAMK2A Rabbit Monoclonal Antibody
Species/Host	Rabbit
Reactivity	Human, Mouse, Rat
Conjugation	Unconjugated
Tested Applications	FC, IP, WB
Immunogen	A synthesized peptide derived from human CaMKII alpha
Form/Appearance	Liquid
Concentration	Actual concentration vary by lot. Use suggested dilution ratio to decide dilution procedure.
Storage	Maintain refrigerated at 2-8°C for up to 2 weeks. For long term storage store at -20°C in small aliquots to prevent freeze-thaw cycles.
Note	For research use only
Application notes	WB 1:1000-1:5000IP 1:50FC 1:100
Isotype	Rabbit IgG
Clonality	Monoclonal
MW	54088 MW
Uniprot ID	Q9UQM7
Expiration Date	12 months from date of receipt.



Western blot analysis of CaMKII alpha ex...