

---

## Product Datasheet

### Cyclophilin B PPIB Antibody (monoclonal, 11C11) (orb548176)

**Description**

Cyclophilin B PPIB Antibody (monoclonal, 11C11)

**Species/Host**

Mouse

**Reactivity**

Human, Mouse, Rat

**Conjugation**

Unconjugated

**Tested Applications**

FC, ICC, IF, IHC, WB

**Immunogen**

E. coli-derived human Cyclophilin B recombinant protein (Position: K158-E216).

**Form/Appearance**

Lyophilized

**Concentration**

Adding 0.2 ml of distilled water will yield a concentration of 500 µg/ml.

**Storage**

Store at -20°C for one year from date of receipt. After reconstitution, at 4°C for one month. It can also be aliquotted and stored frozen at -20°C for six months. Avoid repeated freeze-thaw cycles.

**Note**

For research use only

**Application notes**

Add 0.2ml of distilled water will yield a concentration of 500µg/ml.

**Isotype**

Mouse IgG1

**Clonality**

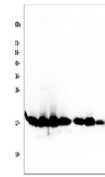
Monoclonal

**MW**

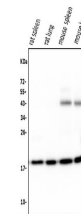
21 kDa

**Uniprot ID**
[P23284](https://www.uniprot.org/protein/P23284)
**Expiration Date**

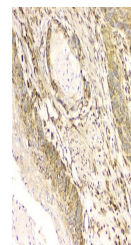
12 months from date of receipt.



Western blot analysis of Cyclophilin B u...



Western blot analysis of Cyclophilin B u...



IHC analysis of Cyclophilin B using anti...