

Product Datasheet

Cyclophilin B PPIB Rabbit Monoclonal Antibody (orb548175)

Description Cyclophilin B PPIB Rabbit Monoclonal Antibody

Species/Host Rabbit

Reactivity Human, Mouse, Rat

Conjugation Unconjugated

Tested Applications WB

Immunogen A synthesized peptide derived from human Cyclophilin B

Form/Appearance Liquid

Concentration Actual concentration vary by lot. Use suggested dilution ratio to decide dilution procedure.

Storage Maintain refrigerated at 2-8°C for up to 2 weeks. For long term storage store at -20°C in small aliquots to prevent freeze-thaw cycles.

Note For research use only

Application notes WB 1:500-1:2000

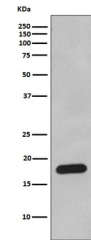
Isotype Rabbit IgG

Clonality Monoclonal

MW 23743 MW

Uniprot ID [P23284](#)

Expiration Date 12 months from date of receipt.



Western blot analysis of Cyclophilin B e...