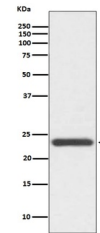


Product Datasheet

HE4 WFDC2 Rabbit Monoclonal Antibody (orb548084)

Description	HE4 WFDC2 Rabbit Monoclonal Antibody
Species/Host	Rabbit
Reactivity	Human, Mouse
Conjugation	Unconjugated
Tested Applications	FC, ICC, IF, IP, WB
Immunogen	A synthesized peptide derived from human HE4
Form/Appearance	Liquid
Concentration	Actual concentration vary by lot. Use suggested dilution ratio to decide dilution procedure.
Storage	Maintain refrigerated at 2-8°C for up to 2 weeks. For long term storage store at -20°C in small aliquots to prevent freeze-thaw cycles.
Note	For research use only
Application notes	WB 1:500-1:2000 ICC/IF 1:50-1:200 IP 1:50 FC 1:50
Isotype	Rabbit IgG
Clonality	Monoclonal
MW	12993 MW
Uniprot ID	Q14508
Expiration Date	12 months from date of receipt.



Western blot analysis of HE4 expression

...