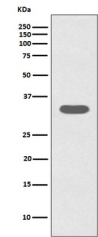


Product Datasheet

Caspase-6 CASP6 Rabbit Monoclonal Antibody (orb548073)

Description	Caspase-6 CASP6 Rabbit Monoclonal Antibody
Species/Host	Rabbit
Reactivity	Human, Mouse, Rat
Conjugation	Unconjugated
Tested Applications	ICC, IF, IHC, IP, WB
Immunogen	A synthesized peptide derived from human Caspase-6
Form/Appearance	Liquid
Concentration	Actual concentration vary by lot. Use suggested dilution ratio to decide dilution procedure.
Storage	Maintain refrigerated at 2-8°C for up to 2 weeks. For long term storage store at -20°C in small aliquots to prevent freeze-thaw cycles.
Note	For research use only
Application notes	WB 1:500-1:1000IHC 1:50-1:200ICC/IF 1:50-1:200IP 1:50. Restore with deionized water (or equivalent) for reconstitution volume of 1.0 mL
Isotype	Rabbit IgG
Clonality	Monoclonal
MW	33310 MW
Uniprot ID	P55212
Sensitivity	20pg/ml
Expiration Date	12 months from date of receipt.



Western blot analysis of Caspase-6 expression.