
Product Datasheet

Inhibin alpha INHA Monoclonal Antibody (orb548031)

Description

Inhibin alpha INHA Monoclonal Antibody

Species/Host

Rabbit

Reactivity

Human, Mouse, Rat

Conjugation

Unconjugated

Tested

FC, WB

Applications
Immunogen

A synthesized peptide derived from human Inhibin alpha Inhibins and activins inhibit and activate, respectively, the secretion of follitropin by the pituitary gland. Inhibins/activins are involved in regulating a number of diverse functions such as hypothalamic and pituitary hormone secretion, gonadal hormone secretion, germ cell development and maturation, erythroid differentiation, insulin secretion, nerve cell survival, embryonic axial development or bone growth, depending on their subunit composition.

Form/Appearance

Liquid

Concentration

Actual concentration vary by lot. Use suggested dilution ratio to decide dilution procedure.

Storage

Maintain refrigerated at 2-8°C for up to 2 weeks. For long term storage store at -20°C in small aliquots to prevent freeze-thaw cycles.

Note

For research use only

Application notes

WB 1:500-1:2000FC 1:100

Isotype

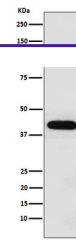
Rabbit IgG

Clonality

Monoclonal

Uniprot ID
P05111
Expiration Date

12 months from date of receipt.



Western blot analysis of INHA using anti...