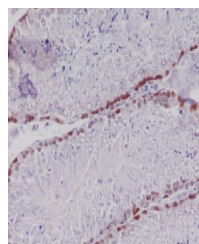


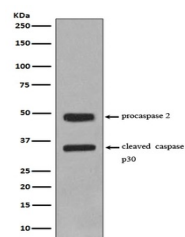
Product Datasheet

Caspase-2 CASP2 Rabbit Monoclonal Antibody (orb548023)

Description	Caspase-2 CASP2 Rabbit Monoclonal Antibody
Species/Host	Rabbit
Reactivity	Human, Mouse, Rat
Conjugation	Unconjugated
Tested Applications	FC, ICC, IF, IHC, WB
Immunogen	A synthesized peptide derived from human Caspase-2
Form/Appearance	Liquid
Concentration	Actual concentration vary by lot. Use suggested dilution ratio to decide dilution procedure.
Storage	Maintain refrigerated at 2-8°C for up to 2 weeks. For long term storage store at -20°C in small aliquots to prevent freeze-thaw cycles.
Note	For research use only
Application notes	WB 1:500-2000IHC 1:50-200ICC/IF 1:50-200FC 1:50
Isotype	Rabbit IgG
Clonality	Monoclonal
MW	50685 MW
Uniprot ID	P42575
Expiration Date	12 months from date of receipt.



Immunohistochemical analysis of paraffin...



Western blot analysis of Caspase-2 expres...