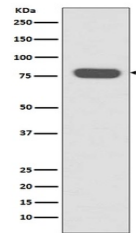


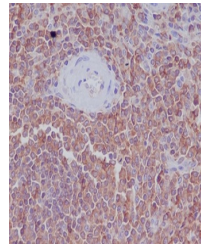
Product Datasheet

Radixin Rabbit Monoclonal Antibody (orb547905)

Description	Radixin Rabbit Monoclonal Antibody
Species/Host	Rabbit
Reactivity	Human, Mouse, Rat
Conjugation	Unconjugated
Tested Applications	FC, ICC, IF, IHC, IP, WB
Immunogen	A synthesized peptide derived from human Radixin
Form/Appearance	Liquid
Concentration	Actual concentration vary by lot. Use suggested dilution ratio to decide dilution procedure.
Storage	Maintain refrigerated at 2-8°C for up to 2 weeks. For long term storage store at -20°C in small aliquots to prevent freeze-thaw cycles.
Note	For research use only
Application notes	WB 1:5000-1:10000IHC 1:50-1:200ICC/IF 1:50-1:200IP 1:100FC 1:100
Isotype	Rabbit IgG
Clonality	Monoclonal
MW	68564 MW
Uniprot ID	P35241
Expiration Date	12 months from date of receipt.



Western blot analysis of Radixin express...



Immunohistochemical analysis of paraffin...