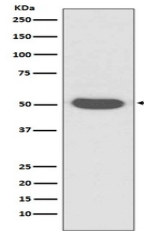


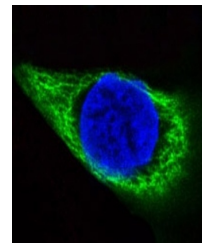
## Product Datasheet

# Cytokeratin 14 KRT14 Rabbit Monoclonal Antibody (orb547746)

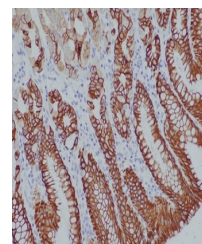
|                            |   |
|----------------------------|---|
| <b>Description</b>         | Cytokeratin 14 KRT14 Rabbit Monoclonal Antibody   |
| <b>Species/Host</b>        | Rabbit  |
| <b>Reactivity</b>          | Human, Mouse, Rat   |
| <b>Conjugation</b>         | Unconjugated  |
| <b>Tested Applications</b> | ICC, IF, IHC, WB  |
| <b>Immunogen</b>           | A synthesized peptide derived from human Cytokeratin 14   |
| <b>Form/Appearance</b>     | Liquid  |
| <b>Concentration</b>       | Actual concentration vary by lot. Use suggested dilution ratio to decide dilution procedure.  |
| <b>Storage</b>             | Maintain refrigerated at 2-8°C for up to 2 weeks. For long term storage store at -20°C in small aliquots to prevent freeze-thaw cycles. |
| <b>Note</b>                | For research use only   |
| <b>Application notes</b>   | WB 1:1000-1:2000IHC 1:50-1:200ICC/IF 1:50-1:200   |
| <b>Isotype</b>             | Rabbit IgG  |
| <b>Clonality</b>           | Monoclonal  |
| <b>MW</b>                  | 51561 MW  |
| <b>Uniprot ID</b>          | <b>P02533</b>   |
| <b>Expiration Date</b>     | 12 months from date of receipt.   |



Western blot analysis of Cytokeratin 14 ...



Immunofluorescent analysis of HACAT cell...



Immunohistochemical analysis of paraffin...