

Product Datasheet

Cytokeratin 14 KRT14 Rabbit Monoclonal Antibody (orb547745)

Description Cytokeratin 14 KRT14 Rabbit Monoclonal Antibody

Species/Host Rabbit

Reactivity Human

Conjugation Unconjugated

Tested Applications FC, ICC, IF, IHC, IP, WB

Immunogen A synthesized peptide derived from human Cytokeratin 14

Form/Appearance Liquid

Concentration Actual concentration vary by lot. Use suggested dilution ratio to decide dilution procedure.

Storage Maintain refrigerated at 2-8°C for up to 2 weeks. For long term storage store at -20°C in small aliquots to prevent freeze-thaw cycles.

Note For research use only

Application notes WB 1:500-1:2000 IHC 1:50-1:200 ICC/IF 1:50-1:200 IP 1:500 FC 1:50

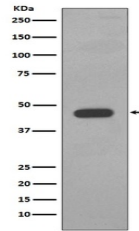
Isotype Rabbit IgG

Clonality Monoclonal

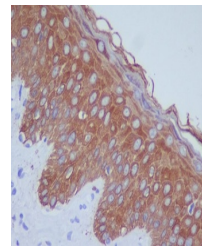
MW 51561 MW

Uniprot ID [P02533](#)

Expiration Date 12 months from date of receipt.



Western blot analysis of Cytokeratin 14 ...



Immunohistochemical analysis of paraffin...