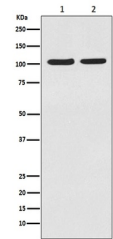


Product Datasheet

HIF-2 alpha EPAS1 Rabbit Monoclonal Antibody (orb547678)

Description	HIF-2 alpha EPAS1 Rabbit Monoclonal Antibody
Species/Host	Rabbit
Reactivity	Human, Mouse, Rat
Conjugation	Unconjugated
Tested Applications	FC, ICC, IF, WB
Immunogen	A synthesized peptide derived from human HIF-2 alpha
Form/Appearance	Liquid
Concentration	Actual concentration vary by lot. Use suggested dilution ratio to decide dilution procedure.
Storage	Maintain refrigerated at 2-8°C for up to 2 weeks. For long term storage store at -20°C in small aliquots to prevent freeze-thaw cycles.
Note	For research use only
Application notes	WB 1:500-1:2000 ICC/IF 1:50-1:200 FC 1:50
Isotype	Rabbit IgG
Clonality	Monoclonal
MW	96459 MW
Uniprot ID	Q99814
Expiration Date	12 months from date of receipt.



Western blot analysis of HIF-2 alpha in ...