

---

## Product Datasheet

### HLA-DRA/Hla Dr Rabbit Monoclonal Antibody (orb547651)

**Description**

HLA-DRA/Hla Dr Rabbit Monoclonal

**Species/Host**

Rabbit

**Reactivity**

Human

**Conjugation**

Unconjugated

**Tested Applications**

FC, ICC, IF, IHC, WB

**Immunogen**

A synthesized peptide derived from human HLA-DRA

**Preservatives**

Rabbit IgG in phosphate buffered saline, pH 7.4, 150mM NaCl, 0.02% sodium azide and 50% glycerol, 0.4-0.5mg/ml rAlbumin

**Form/Appearance**

Liquid

**Concentration**

Actual concentration vary by lot. Use suggested dilution ratio to decide dilution procedure.

**Storage**

Store at -20°C for one year. For short term storage and frequent use, store at 4°C for up to one month. Avoid repeated freeze-thaw cycles

**Note**

For research use only

**Application notes**

WB 1:1000-1:5000 IHC 1:50-1:200 ICC/IF 1:50-1:200 FC 1:50

**Isotype**

IgG

**Clonality**

Monoclonal

**MW**

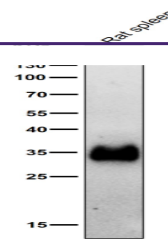
28.607 kDa

**Uniprot ID**
**P01903**
**Dilution Range**

WB 1:1000-1:5000, IHC 1:50-1:200, ICC/IF 1:50-1:200, FC 1:50

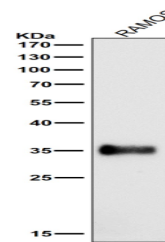
**Expiration Date**

12 months from date of receipt.



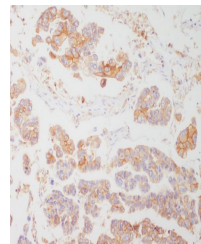
Antibody at 1:5K dilution for 1 hour at

...



Antibody at 1:5K dilution for 1 hour at

...



Immunohistochemical analysis of paraffin...