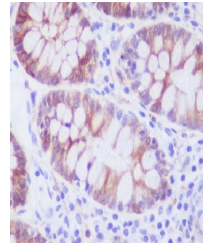


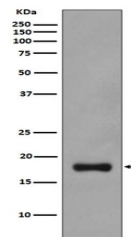
Product Datasheet

Stathmin 1 STMN1 Rabbit Monoclonal Antibody (orb547650)

Description	Stathmin 1 STMN1 Rabbit Monoclonal Antibody
Species/Host	Rabbit
Reactivity	Human, Mouse, Rat
Conjugation	Unconjugated
Tested Applications	FC, ICC, IF, IHC, IP, WB
Immunogen	A synthesized peptide derived from human Stathmin 1
Form/Appearance	Liquid
Concentration	Actual concentration vary by lot. Use suggested dilution ratio to decide dilution procedure.
Storage	Maintain refrigerated at 2-8°C for up to 2 weeks. For long term storage store at -20°C in small aliquots to prevent freeze-thaw cycles.
Note	For research use only
Application notes	WB 1:500-1:2000IHC 1:50-1:100ICC/IF 1:50-1:100IP 1:50FC 1:50
Isotype	Rabbit IgG
Clonality	Monoclonal
MW	17303 MW
Uniprot ID	P16949
Expiration Date	12 months from date of receipt.



Immunohistochemical analysis of paraffin...



WB analysis of Stathmin 1 expression in ...