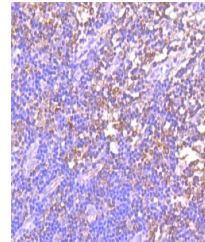


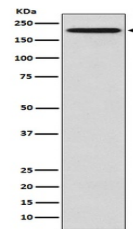
Product Datasheet

GCN2 EIF2AK4 Rabbit Monoclonal Antibody (orb547640)

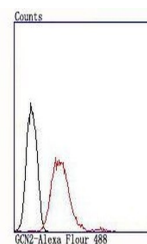
Description	GCN2 EIF2AK4 Rabbit Monoclonal Antibody
Species/Host	Rabbit
Reactivity	Human
Conjugation	Unconjugated
Tested Applications	FC, ICC, IF, IHC, WB
Immunogen	A synthesized peptide derived from human GCN2 Can phosphorylate the alpha subunit of EIF2 and may mediate translational control.
Form/Appearance	Liquid
Concentration	Actual concentration vary by lot. Use suggested dilution ratio to decide dilution procedure.
Storage	Maintain refrigerated at 2-8°C for up to 2 weeks. For long term storage store at -20°C in small aliquots to prevent freeze-thaw cycles.
Note	For research use only
Application notes	WB 1:500-1:2000IHC 1:50-1:200ICC/IF 1:50-1:200FC 1:100
Isotype	Rabbit IgG
Clonality	Monoclonal
Uniprot ID	Q9P2K8
Expiration Date	12 months from date of receipt.



Immunohistochemical analysis of paraffin...



WB analysis of EIF2AK4 expression in HeL...



Flow cytometric analysis of MCF-7 cells ...