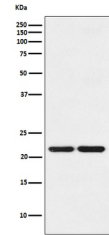


Product Datasheet

HP1 gamma Rabbit Monoclonal Antibody (orb547630)

Description	HP1 gamma Rabbit Monoclonal Antibody
Species/Host	Rabbit
Reactivity	Human, Mouse, Rat
Conjugation	Unconjugated
Tested Applications	FC, IHC, IP, WB
Immunogen	A synthesized peptide derived from human HP1 gamma
Form/Appearance	Liquid
Concentration	Actual concentration vary by lot. Use suggested dilution ratio to decide dilution procedure.
Storage	Maintain refrigerated at 2-8°C for up to 2 weeks. For long term storage store at -20°C in small aliquots to prevent freeze-thaw cycles.
Note	For research use only
Application notes	WB 1:500-1:2000IHC 1:50-1:200IP 1:50FC 1:100
Isotype	Rabbit IgG
Clonality	Monoclonal
Uniprot ID	Q13185
Expiration Date	12 months from date of receipt.



WB analysis of CBX3 expression in (1) He...