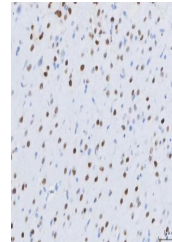


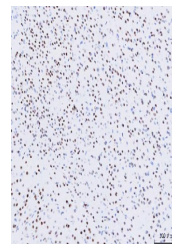
Product Datasheet

MEF2A+MEF2C Rabbit Monoclonal Antibody (orb547628)

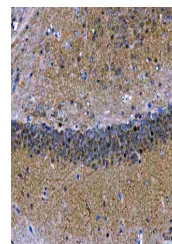
Description	MEF2A+MEF2C Rabbit Monoclonal Antibody
Species/Host	Rabbit
Reactivity	Human, Mouse, Rat
Conjugation	Unconjugated
Tested Applications	FC, ICC, IF, IHC, WB
Immunogen	A synthesized peptide derived from human MEF2A+MEF2C
Form/Appearance	Liquid
Concentration	Actual concentration vary by lot. Use suggested dilution ratio to decide dilution procedure.
Storage	Maintain refrigerated at 2-8°C for up to 2 weeks. For long term storage store at -20°C in small aliquots to prevent freeze-thaw cycles.
Note	For research use only
Application notes	WB 1:500-1:2000IHC 1:50-1:200ICC/IF 1:50-1:200FC 1:30
Isotype	Rabbit IgG
Clonality	Monoclonal
MW	51221 MW
Uniprot ID	Q06413 , Q02078
Expiration Date	12 months from date of receipt.



IHC analysis of MEF2A+MEF2C using anti-M...



IHC analysis of MEF2A+MEF2C using anti-M...



IHC analysis of MEF2A+MEF2C using anti-M...