

Product Datasheet

Hsp90 alpha + beta HSP90AA1 Rabbit Monoclonal Antibody (orb547614)

Description Hsp90 alpha + beta HSP90AA1 Rabbit Monoclonal Antibody

Species/Host Rabbit

Reactivity Human, Mouse, Rat

Conjugation Unconjugated

Tested Applications FC, ICC, IF, IHC, IP, WB

Immunogen A synthesized peptide derived from human Hsp90 alpha + beta

Form/Appearance Liquid

Concentration Actual concentration vary by lot. Use suggested dilution ratio to decide dilution procedure.

Storage Maintain refrigerated at 2-8°C for up to 2 weeks. For long term storage store at -20°C in small aliquots to prevent freeze-thaw cycles.

Note For research use only

Application notes WB 1:5000-1:10000IHC 1:50-1:200ICC/IF 1:50-1:200IP 1:50FC 1:100

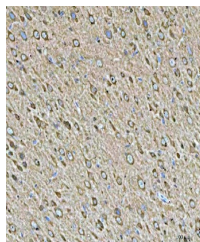
Isotype Rabbit IgG

Clonality Monoclonal

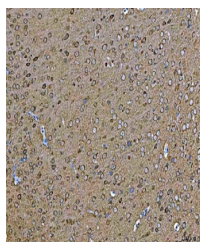
MW 84660 MW

Uniprot ID [P08238](#), [P07900](#)

Expiration Date 12 months from date of receipt.



Immunohistochemical analysis of paraffin...



Immunohistochemical analysis of paraffin...



Immunohistochemical analysis of paraffin...