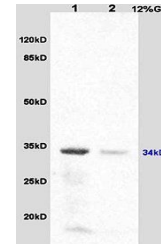


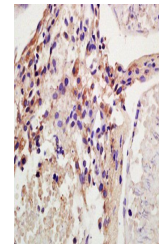
Product Datasheet

HSD17B3 antibody (orb5476)

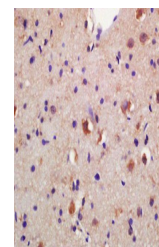
Description	HSD17B3 antibody
Species/Host	Rabbit
Reactivity	Human, Mouse, Rat
Conjugation	Unconjugated
Tested Applications	IHC-P
Immunogen	KLH conjugated synthetic peptide derived from human HSD17B3 (101-200/310 aa)
Target	HSD17B3
Preservatives	0.01M TBS(pH7.4) with 1% rAlbumin, 0.03% Proclin300 and 50% Glycerol.
Form/Appearance	Liquid
Concentration	1mg/ml
Storage	Shipped at 4°C. Store at -20 °C for one year. Avoid repeated freeze/thaw cycles.
Note	For research use only
Isotype	IgG
Clonality	Polyclonal
MW	34 kDa
Uniprot ID	P37058
Dilution Range	IHC-P=1:100-500, WB=1:500-2000, IHC-F=1:100-500, IF=1:100-500, ELISA=1:5000-10000
Expiration Date	12 months from date of receipt.



Western blot analysis of mouse testis lysate.



Paraffin-embedded rat testis tissue fixed...



Paraffin-embedded rat brain tissue fixed...