

Product Datasheet

Caspase-7 Casp7 Rabbit Monoclonal Antibody (orb547587)

Description Caspase-7 Casp7 Rabbit Monoclonal Antibody

Species/Host Rabbit

Reactivity Mouse, Rat

Conjugation Unconjugated

Tested Applications IHC, IP, WB

Immunogen A synthesized peptide derived from human Caspase-7

Form/Appearance Liquid

Concentration Actual concentration vary by lot. Use suggested dilution ratio to decide dilution procedure.

Storage Maintain refrigerated at 2-8°C for up to 2 weeks. For long term storage store at -20°C in small aliquots to prevent freeze-thaw cycles.

Note For research use only

Application notes WB 1:500-1:1000IHC 1:50-1:200IP 1:50

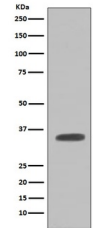
Isotype Rabbit IgG

Clonality Monoclonal

MW 34061 MW

Uniprot ID [P97864](#)

Expiration Date 12 months from date of receipt.



WB analysis of Caspase-7 expression in N...