

Product Datasheet

Syndecan 1 SDC1 Rabbit Monoclonal Antibody (orb547559)

Description Syndecan 1 SDC1 Rabbit Monoclonal Antibody

Species/Host Rabbit

Reactivity Human, Mouse, Rat

Conjugation Unconjugated

Tested Applications ICC, IF, IHC, WB

Immunogen A synthesized peptide derived from human Syndecan 1

Form/Appearance Liquid

Concentration Actual concentration vary by lot. Use suggested dilution ratio to decide dilution procedure.

Storage Maintain refrigerated at 2-8°C for up to 2 weeks. For long term storage store at -20°C in small aliquots to prevent freeze-thaw cycles.

Note For research use only

Application notes WB 1:500-1:2000 IHC 1:100-1:500 ICC/IF 1:50-1:200

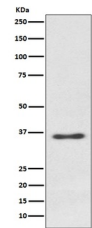
Isotype Rabbit IgG

Clonality Monoclonal

MW 32462 MW

Uniprot ID [P18827](#)

Expiration Date 12 months from date of receipt.



WB analysis of Syndecan 1 expression in ...