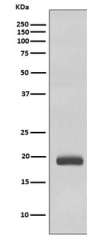


Product Datasheet

Caveolin-3 CAV3 Rabbit Monoclonal Antibody (orb547557)

Description	Caveolin-3 CAV3 Rabbit Monoclonal Antibody
Species/Host	Rabbit
Reactivity	Human, Mouse, Rat
Conjugation	Unconjugated
Tested Applications	WB
Immunogen	A synthesized peptide derived from human Caveolin-3
Form/Appearance	Liquid
Concentration	Actual concentration vary by lot. Use suggested dilution ratio to decide dilution procedure.
Storage	Maintain refrigerated at 2-8°C for up to 2 weeks. For long term storage store at -20°C in small aliquots to prevent freeze-thaw cycles.
Note	For research use only
Application notes	WB 1:500-1:2000
Isotype	Rabbit IgG
Clonality	Monoclonal
MW	17259 MW
Uniprot ID	P56539
Expiration Date	12 months from date of receipt.



WB analysis of Caveolin 3 expression in ...