
Product Datasheet

Topoisomerase II alpha TOP2A Rabbit Monoclonal Antibody (orb547542)

Description

Topoisomerase II alpha TOP2A Rabbit


Species/Host

Rabbit

Reactivity

Human, Mouse, Rat

Conjugation

Unconjugated

Tested Applications

IHC, IP, WB

Immunogen

A synthesized peptide derived from human Topoisomerase II alpha

Form/Appearance

Liquid

Concentration

Actual concentration vary by lot. Use suggested dilution ratio to decide dilution procedure.

Storage

Maintain refrigerated at 2-8°C for up to 2 weeks. For long term storage store at -20°C in small aliquots to prevent freeze-thaw cycles.

Note

For research use only

Application notes

WB 1:500-1:2000 IHC 1:50-1:200 IP 1:50. Restore with deionized water (or equivalent) for reconstitution volume of 1.0 mL

Isotype

Rabbit IgG

Clonality

Monoclonal

MW

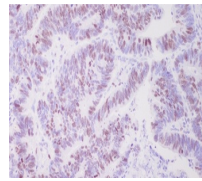
174385 MW

Uniprot ID
P11388
Sensitivity

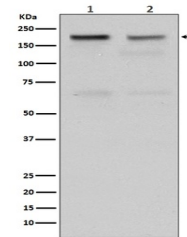
10pg/ml

Expiration Date

12 months from date of receipt.



Immunohistochemical analysis of paraffin...



WB analysis of Topoisomerase II alpha ex...