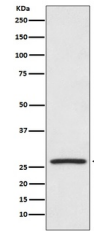


Product Datasheet

Hsp27 HSPB1 Rabbit Monoclonal Antibody (orb547430)

| | |
|----------------------------|--|
| Description | Hsp27 HSPB1 Rabbit Monoclonal Antibody |
| Species/Host | Rabbit |
| Reactivity | Human, Mouse, Rat |
| Conjugation | Unconjugated |
| Tested Applications | FC, ICC, IF, IHC, IP, WB |
| Immunogen | A synthesized peptide derived from human Hsp27 |
| Form/Appearance | Liquid |
| Concentration | Actual concentration vary by lot. Use suggested dilution ratio to decide dilution procedure. |
| Storage | Maintain refrigerated at 2-8°C for up to 2 weeks. For long term storage store at -20°C in small aliquots to prevent freeze-thaw cycles. |
| Note | For research use only |
| Application notes | WB 1:500-1:1000IHC 1:50-1:200ICC/IF 1:50-1:200IP 1:50FC 1:50 |
| Isotype | Rabbit IgG |
| Clonality | Monoclonal |
| MW | 22783 MW |
| Uniprot ID | P04792 |
| Expiration Date | 12 months from date of receipt. |



WB analysis of Hsp27 expression in HeLa ...