

## Product Datasheet

# Integrin beta 3 ITGB3 Rabbit Monoclonal Antibody (orb547393)

**Description** Integrin beta 3 ITGB3 Rabbit Monoclonal Antibody

**Species/Host** Rabbit

**Reactivity** Human, Mouse, Rat

**Conjugation** Unconjugated

**Tested Applications** ICC, IF, IHC, WB

**Immunogen** A synthesized peptide derived from human Integrin beta 3

**Form/Appearance** Liquid

**Concentration** Actual concentration vary by lot. Use suggested dilution ratio to decide dilution procedure.

**Storage** Maintain refrigerated at 2-8°C for up to 2 weeks. For long term storage store at -20°C in small aliquots to prevent freeze-thaw cycles.

**Note** For research use only

**Application notes** WB 1:1000-1:2000 IHC 1:50-1:200 ICC/IF 1:50-1:200

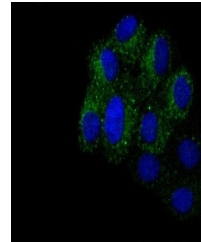
**Isotype** Rabbit IgG

**Clonality** Monoclonal

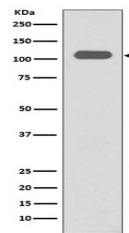
**MW** 87058 MW

**Uniprot ID** [P05106](#)

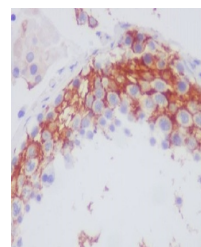
**Expiration Date** 12 months from date of receipt.



ICC staining Integrin beta 3 in HeLa cel...



WB analysis of Integrin beta3 expression...



Immunohistochemical analysis of paraffin...