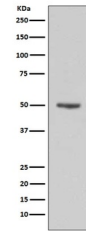


Product Datasheet

Cyclin E1 CCNE1 Rabbit Monoclonal Antibody (orb547368)

Description	Cyclin E1 CCNE1 Rabbit Monoclonal Antibody
Species/Host	Rabbit
Reactivity	Human
Conjugation	Unconjugated
Tested Applications	FC, ICC, IF, IP, WB
Immunogen	A synthesized peptide derived from human Cyclin E1
Form/Appearance	Liquid
Concentration	Actual concentration vary by lot. Use suggested dilution ratio to decide dilution procedure.
Storage	Maintain refrigerated at 2-8°C for up to 2 weeks. For long term storage store at -20°C in small aliquots to prevent freeze-thaw cycles.
Note	For research use only
Application notes	WB 1:500-1:2000 ICC/IF 1:50-1:200 IP 1:50 FC 1:50
Isotype	Rabbit IgG
Clonality	Monoclonal
MW	47077 MW
Uniprot ID	P24864
Expiration Date	12 months from date of receipt.



WB analysis of Cyclin E1 expression in H...