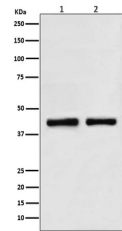


Product Datasheet

SNF5 SMARCB1 Rabbit Monoclonal Antibody (orb547345)

Description	SNF5 SMARCB1 Rabbit Monoclonal Antibody
Species/Host	Rabbit
Reactivity	Human, Mouse, Rat
Conjugation	Unconjugated
Tested Applications	IP, WB
Immunogen	A synthesized peptide derived from human SNF5
Form/Appearance	Liquid
Concentration	Actual concentration vary by lot. Use suggested dilution ratio to decide dilution procedure.
Storage	Maintain refrigerated at 2-8°C for up to 2 weeks. For long term storage store at -20°C in small aliquots to prevent freeze-thaw cycles.
Note	For research use only
Application notes	WB 1:500-1:2000IP 1:50
Isotype	Rabbit IgG
Clonality	Monoclonal
MW	44141 MW
Uniprot ID	Q12824
Expiration Date	12 months from date of receipt.



WB analysis of SNF5 in (1) HeLa Cell; (2...)