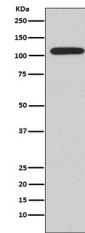


## Product Datasheet

# NFAT2 NFATC1 Rabbit Monoclonal Antibody (orb547257)

<b>Description</b>	NFAT2 NFATC1 Rabbit Monoclonal Antibody
<b>Species/Host</b>	Rabbit
<b>Reactivity</b>	Human
<b>Conjugation</b>	Unconjugated
<b>Tested Applications</b>	FC, ICC, IF, WB
<b>Immunogen</b>	A synthesized peptide derived from human NFAT2
<b>Form/Appearance</b>	Liquid
<b>Concentration</b>	Actual concentration vary by lot. Use suggested dilution ratio to decide dilution procedure.
<b>Storage</b>	Maintain refrigerated at 2-8°C for up to 2 weeks. For long term storage store at -20°C in small aliquots to prevent freeze-thaw cycles.
<b>Note</b>	For research use only
<b>Application notes</b>	WB 1:500-1:2000 ICC/IF 1:50-1:200 FC 1:50
<b>Isotype</b>	Rabbit IgG
<b>Clonality</b>	Monoclonal
<b>MW</b>	101243 MW
<b>Uniprot ID</b>	<a href="#">O95644</a>
<b>Expiration Date</b>	12 months from date of receipt.



WB analysis of NFAT2 expression in Ramos...