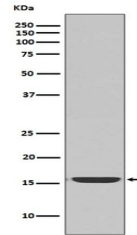


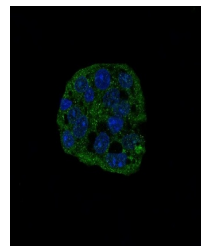
Product Datasheet

active Caspase-3 CASP3 Rabbit Monoclonal Antibody (orb547251)

Description	active Caspase-3 CASP3 Rabbit Monoclonal Antibody
Species/Host	Rabbit
Reactivity	Human
Conjugation	Unconjugated
Tested Applications	ICC, IF, IHC, WB
Immunogen	A synthesized peptide derived from human active Caspase-3
Form/Appearance	Liquid
Concentration	Actual concentration vary by lot. Use suggested dilution ratio to decide dilution procedure.
Storage	Maintain refrigerated at 2-8°C for up to 2 weeks. For long term storage store at -20°C in small aliquots to prevent freeze-thaw cycles.
Note	For research use only
Application notes	WB 1:500-1:2000IHC 1:50-1:100ICC/IF 1:50-1:100
Isotype	Rabbit IgG
Clonality	Monoclonal
MW	31608 MW
Uniprot ID	P42574
Expiration Date	12 months from date of receipt.



WB analysis of active Caspase-3 expressi...



Immunofluorescent analysis of HepG2 cell...