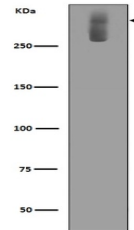


Product Datasheet

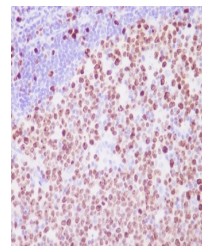
Ki67 MKI67 Rabbit Monoclonal Antibody (orb547195)

Description	Ki67 MKI67 Rabbit Monoclonal Antibody
Species/Host	Rabbit
Reactivity	Human
Conjugation	Unconjugated
Tested Applications	FC, ICC, IF, IHC, WB
Immunogen	A synthesized peptide derived from human Ki67
Form/Appearance	Liquid
Concentration	Actual concentration vary by lot. Use suggested dilution ratio to decide dilution procedure.
Storage	Maintain refrigerated at 2-8°C for up to 2 weeks. For long term storage store at -20°C in small aliquots to prevent freeze-thaw cycles.
Note	For research use only
Application notes	WB 1:500-1:2000IHC 1:50-1:200ICC/IF 1:50-1:200FC 1:50
Isotype	Rabbit IgG
Clonality	Monoclonal
MW	358694 MW
Uniprot ID	P46013
Expiration Date	12 months from date of receipt.



WB analysis of Ki67 expression in Ramos

...



Immunohistochemical analysis of paraffin...