

---

## Product Datasheet

### Hemoglobin subunit alpha HBA1 Rabbit Monoclonal Antibody (orb547176)

**Description**

Hemoglobin subunit alpha HBA1 Rabbit



WB analysis of Hemoglobin subunit alpha ...

**Species/Host**

Rabbit

**Reactivity**

Human, Mouse, Rat

**Conjugation**

Unconjugated

**Tested Applications**

FC, IHC, IP, WB

**Immunogen**

A synthesized peptide derived from human Hemoglobin subunit alpha

**Form/Appearance**

Liquid

**Concentration**

Actual concentration vary by lot. Use suggested dilution ratio to decide dilution procedure.

**Storage**

Maintain refrigerated at 2-8°C for up to 2 weeks. For long term storage store at -20°C in small aliquots to prevent freeze-thaw cycles.

**Note**

For research use only

**Application notes**

WB 1:500-1:2000 IHC 1:50-1:200 IP 1:50 FC 1:50. Restore with deionized water (or equivalent) for reconstitution volume of 1.0 mL

**Isotype**

Rabbit IgG

**Clonality**

Monoclonal

**MW**

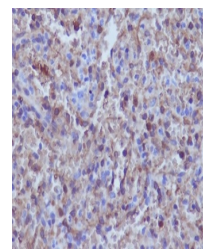
15258 MW

**Uniprot ID**
**P69905**
**Sensitivity**

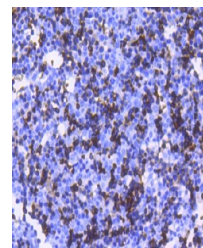
10pg/ml

**Expiration Date**

12 months from date of receipt.



Immunohistochemical analysis of paraffin...



Immunohistochemical analysis of paraffin...