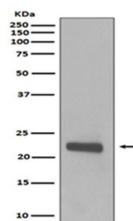


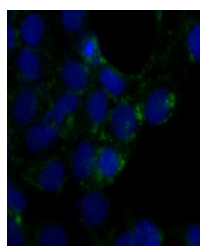
Product Datasheet

Caveolin-1 CAV1 Rabbit Monoclonal Antibody (orb547128)

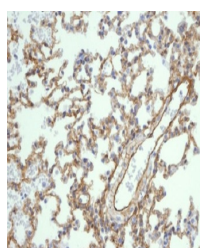
Description	Caveolin-1 CAV1 Rabbit Monoclonal Antibody
Species/Host	Rabbit
Reactivity	Human, Mouse, Rat
Conjugation	Unconjugated
Tested Applications	FC, ICC, IF, IHC, WB
Immunogen	A synthesized peptide derived from human Caveolin-1
Form/Appearance	Liquid
Concentration	Actual concentration vary by lot. Use suggested dilution ratio to decide dilution procedure.
Storage	Maintain refrigerated at 2-8°C for up to 2 weeks. For long term storage store at -20°C in small aliquots to prevent freeze-thaw cycles.
Note	For research use only
Application notes	WB 1:500-1:2000IHC 1:50-1:200ICC/IF 1:50-1:200FC 1:20
Isotype	Rabbit IgG
Clonality	Monoclonal
MW	20472 MW
Uniprot ID	Q03135
Expiration Date	12 months from date of receipt.



WB analysis of Caveolin-1 expression in ...



Immunofluorescent analysis of A431 cells...



Immunohistochemical analysis of paraffin...