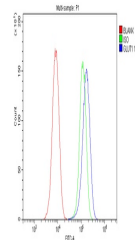


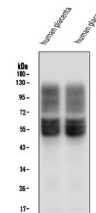
Product Datasheet

SLC2A1 Antibody (monoclonal, 10C10) (orb547113)

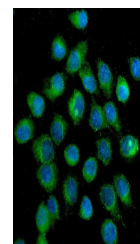
| | |
|----------------------------|---|
| Description | SLC2A1 Antibody (monoclonal, 10C10) |
| Species/Host | Mouse |
| Reactivity | Human |
| Conjugation | Unconjugated |
| Tested Applications | FC, ICC, IF, IHC, WB |
| Immunogen | E.coli-derived human SLC2A1 recombinant protein (Position: R92-V492). Human SLC2A1 shares 98% and 98.3% amino acid (aa) sequence identity with mouse and rat SLC2A1, respectively. |
| Form/Appearance | Lyophilized |
| Concentration | Adding 0.2 ml of distilled water will yield a concentration of 500 µg/ml. |
| Storage | Store at -20°C for one year from date of receipt. After reconstitution, at 4°C for one month. It can also be aliquotted and stored frozen at -20°C for six months. Avoid repeated freeze-thaw cycles. |
| Note | For research use only |
| Application notes | Add 0.2ml of distilled water will yield a concentration of 500µg/ml. |
| Isotype | Mouse IgG1 |
| Clonality | Monoclonal |
| MW | 55 kDa |
| Uniprot ID | P11166 |
| Expiration Date | 12 months from date of receipt. |



Flow Cytometry analysis of U2OS cells us...



WB analysis of SLC2A1 using anti-SLC2A1 ...



IF analysis of SLC2A1 using anti-SLC2A1 ...