

Product Datasheet

pan Cadherin 1 CDH1 Rabbit Monoclonal Antibody (orb547021)

Description pan Cadherin 1 CDH1 Rabbit Monoclonal Antibody

Species/Host Rabbit

Reactivity Human, Mouse, Rat

Conjugation Unconjugated

Tested Applications FC, ICC, IF, IHC, IP, WB

Immunogen A synthesized peptide derived from human pan Cadherin

Form/Appearance Liquid

Concentration Actual concentration vary by lot. Use suggested dilution ratio to decide dilution procedure.

Storage Maintain refrigerated at 2-8°C for up to 2 weeks. For long term storage store at -20°C in small aliquots to prevent freeze-thaw cycles.

Note For research use only

Application notes WB 1:1000-1:5000 IHC 1:50-1:200 ICC/IF 1:50-1:200 IP 1:50 FC 1:50

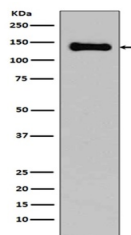
Isotype Rabbit IgG

Clonality Monoclonal

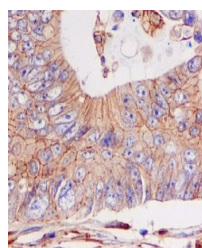
MW 97456 MW

Uniprot ID [P22223](#), [P33151](#), [P19022](#), [P39038](#), [P55283](#), [P12830](#)

Expiration Date 12 months from date of receipt.



WB analysis of pan Cadherin expression i...



Immunohistochemical analysis of paraffin...