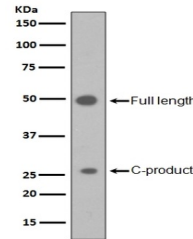


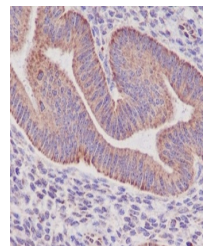
Product Datasheet

Sonic Hedgehog SHH Rabbit Monoclonal Antibody (orb547018)

Description	Sonic Hedgehog SHH Rabbit Monoclonal Antibody
Species/Host	Rabbit
Reactivity	Human
Conjugation	Unconjugated
Tested Applications	FC, ICC, IF, IHC, WB
Immunogen	A synthesized peptide derived from human Sonic Hedgehog
Form/Appearance	Liquid
Concentration	Actual concentration vary by lot. Use suggested dilution ratio to decide dilution procedure.
Storage	Maintain refrigerated at 2-8°C for up to 2 weeks. For long term storage store at -20°C in small aliquots to prevent freeze-thaw cycles.
Note	For research use only
Application notes	WB 1:500-1:2000IHC 1:50-1:200ICC/IF 1:50-1:200FC 1:50
Isotype	Rabbit IgG
Clonality	Monoclonal
MW	49607 MW
Uniprot ID	Q15465
Expiration Date	12 months from date of receipt.



WB analysis of Sonic Hedgehog in HepG2 C...



Immunohistochemical analysis of paraffin...