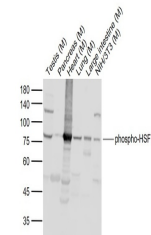


Product Datasheet

HSF1 (phospho-Ser307) antibody (orb5467)

Description	HSF1 (phospho-Ser307) antibody
Species/Host	Rabbit
Reactivity	Mouse
Conjugation	Unconjugated
Tested Applications	WB
Immunogen	KLH conjugated Synthesised phosphopeptide derived from human HSF1 around the phosphorylation site of Ser307 (PQ(p-S)PR)
Target	phospho-HSF1 (Ser307)
Preservatives	0.01M TBS(pH7.4) with 1% rAlbumin, 0.03% Proclin300 and 50% Glycerol.
Form/Appearance	Liquid
Concentration	1mg/ml
Storage	Maintain refrigerated at 2-8°C for up to 2 weeks. For long term storage store at -20°C in small aliquots to prevent freeze-thaw cycles.
Note	For research use only
Isotype	IgG
Clonality	Polyclonal
MW	57 kDa
Uniprot ID	Q00613
Dilution Range	WB=1:500-2000
Expiration Date	12 months from date of receipt.



Western blot: Lane 1: Mouse Testis; Lane 2: ...