
Product Datasheet

Zinc finger protein GLI2 GLI2 Antibody (orb546293)

Description

Zinc finger protein GLI2 GLI2 Antibody

Species/Host

Rabbit

Reactivity

Human, Mouse, Rat

Conjugation

Unconjugated

Tested Applications

ELISA, IHC, WB

Applications
Immunogen

E.coli-derived human GLI2 recombinant protein (Position: K721-D1457).

Form/Appearance

Lyophilized

Concentration

Adding 0.2 ml of distilled water will yield a concentration of 500 µg/ml.

Storage

Store at -20°C for one year from date of receipt. After reconstitution, at 4°C for one month. It can also be aliquotted and stored frozen at -20°C for six months. Avoid repeated freeze-thaw cycles.

Note

For research use only

Application notes

Tested Species: In-house tested species with positive results. By Heat: Boiling the paraffin sections in 10mM citrate buffer, pH6.0, for 20mins is required for the staining of formalin/paraffin sections. Other applications have not been tested. Optimal dilutions should be determined by end users. Add 0.2ml of distilled water will yield a concentration of 500ug/ml.

Isotype

Rabbit IgG

Clonality

Polyclonal

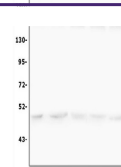
MW

210 kDa

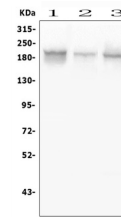
Uniprot ID
P10070
Expiration Date

12 months from date of receipt.

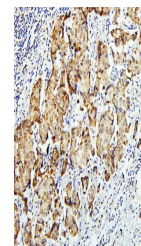
1 2 3 4 5



WB analysis of GLI2 using anti-GLI2 anti...



WB analysis of GLI2 using anti-GLI2 anti...



IHC analysis of GLI2 using anti-GLI2 ant...